



Deciphering Dysphagia with Ampcare's ESP™ (Effective Swallowing Protocol)

Hybrid + Live, In-Person on June 28, 2025

Space is limited to 15

Total of 10 hours Advanced ASHA CEUs



Course Details:

- 6 hours of on-demand pre-course work
- 4 hours of live, in-person training

Saturday, June 14, 2025

12:30 pm - 5:00 m

Hilton Garden Inn Silver Spring

2200 Broadbirch Dr.

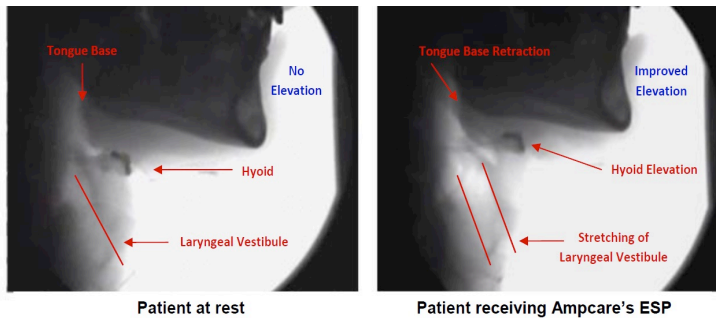
Silver Spring, MD 20904

Phone: (301) 622-3333

- The Most Comprehensive FDA-Cleared Treatment for Dysphagia
- Learn the Latest Assessment Techniques
- Accelerate Recovery by Combining Neuromuscular Electrical Stimulation with Resistive Exercise
- Do More in 30 Minutes
- Earn 1.0 Advanced ASHA CEUs

New 30-minute Treatment for Dysphagia

Ampcare's patented and FDA-cleared system for dysphagia treatment takes traditional therapy approaches to the next level. Ampcare's ESP (Effective Swallowing Protocol) unites the benefits of neuromuscular electrical stimulation (NMES) while incorporating proper postural strategies and resistive exercises.



This seminar will guide clinicians through the latest clinical approach to treat dysphagia. Ampcare's ESP combines NMES with specifically designed electrodes to fit the submental and facial areas to work in conjunction with indirect (NPO) techniques and newly developed therapeutic exercises. This systematic rehabilitation approach works to improve hyo-laryngeal excursion, speed up laryngeal vestibule closure reaction times and enhance swallowing posture by providing the tools to accelerate swallow function.

This course will teach participants the specific rationale behind the parameters best suited for small muscle rehabilitation, review the anatomy of the muscle groups and cranial nerves associated with the swallow, and provide extensive "hands-on" experience using the technique.

Participants will receive:

- 1 (one) package of FDA 510(k)-cleared Ampcare E Series Electrodes
- Training course manual, which will be reviewed with a PowerPoint presentation that includes pictures, exercises, and a flow chart for demonstration purposes and enhanced learning

Agenda:

On-demand pre-course work (6-hours) to be completed ONLINE before the start of live training

- Developing the concept of ESP (:20)
- Evidence-based research validating ESP (:25)
- Anatomy and physiology as it relates to NMES (:55)
- Cranial Nerve Assessment for dysphagia (:20)
- Muscle fiber types and recruitment philosophies
- Fundamental principles of NMES and Ampcare ESP parameters
- Demonstrations and video examples under Videofluoroscopy, FEES, and Ultrasound using ESP
- Electrode placements, Restorative Posture Device (RPD) application, recommended exercises

Live, in-person training (4-hours), 12:30 pm – 5:00 pm

12:30	Join full-day group
12:30-1:00	Programming the Ampcare ES Unit
1:00-2:30	Hands-on Lab Break into Groups; Electrode Application; Administering Exercise Program
2:30-2:45	Break
2:45-3:45	ESP for oral motor management and facial placement with hands-on lab
3:45-4:15	Documentation, billing, and competencies
4:15-5:00	Post-test and Q & A

Accreditation



Faculty

Russ Campbell, PT, is an award-winning therapist and received his degree from Northwestern University in 1989. Over his 30 years of clinical practice, he has provided care in acute care hospitals, inpatient rehab units, skilled nursing facilities, outpatient clinics, and home health arenas. Russ specializes in using modalities in conjunction with a holistic approach to foster faster outcomes to maximize the quality of life of the elderly patient. He has provided over 500 continuing education trainings to physical, occupational, and speech therapists across the country.



Ronda Polansky, MS, CCC-SLP, is an ASHA-certified Speech Language Pathologist and owner of DiagnosTEX, a mobile Modified Barium Swallow Study company in Dallas/Fort Worth, Texas. She has more than 25 years of experience specializing in dysphagia and has performed over 15,000 Modified Barium Swallow Studies (MBSS). Ronda has led CE courses and has published materials on dysphagia. She received her Master of Science in Communication Science Disorders/Speech Pathology from Texas Woman's University in 1992.



Rick McAdoo, MS, CCC-SLP, received a Bachelor of Science in Speech-Language Pathology from Texas Christian University in 1989 and received his Master of Science in Speech-Language Pathology from Texas Christian University in 1990. He has worked primarily with the adult neurogenic population with a specialized emphasis on dysphagia. Over the past 20 years, his focus has included a research component and was the first to show hyo-laryngeal excursion using transcutaneous neuromuscular electrical stimulation on both a computerized laryngeal analyzer and under videofluoroscopy.



Course instructors may vary based on the number of attendees.

Disclosure Statements:

Russ Campbell, PT, Disclosures: Financial: Russ has intellectual property rights, holds a patent on Ampcare ESP Technology, and receives compensation for its sale. He is employed by and has ownership interests in Ampcare, LLC, and receives a salary. Nonfinancial: He has no relevant nonfinancial relationships to disclose.

Rick McAdoo, MS, CCC-SLP, Disclosures: Financial: Rick has intellectual property rights, holds a patent on Ampcare ESP Technology, and receives compensation for its sale. He is employed by and has ownership interests in Ampcare, LLC, and receives a salary. Nonfinancial: He has no relevant nonfinancial relationships to disclose.

Ronda Polansky, MS, CCC-SLP, Disclosures: Financial: Ronda has intellectual property rights, holds a patent on the Ampcare ESP Technology, and receives compensation for its sale. She has ownership interests in Ampcare, LLC. Nonfinancial: She has no relevant nonfinancial relationships to disclose.

This presentation will focus exclusively on Ampcare products and Ampcare's Effective Swallowing Protocol (ESP) and will not include information on other similar or related products, services, and therapy techniques.



**FDA-Cleared for the
Treatment of Dysphagia**

REGISTRATION

[Click Here to Register](#)

To pay by check, please contact Ampcare for arrangements.

Phone: (682) 561-2444 x1 email: info@ampcarellc.com

Training & Equipment Costs

On-Demand + Live Training

\$ 400 Regular course fee if purchasing training only

\$ 350 If purchasing equipment with training, the course fee is reduced to \$300 and the equipment will be invoiced for an *additional* \$ 899 (+ tax and shipping if applicable)

Ampcare ESP Kit

*Payment for invoiced equipment due
by course date to allow for delivery in person*

\$ 899 ESP Kit includes NMES unit, 10 packages of E Series Electrodes (Large/Adult or Small/Youth), and Posture Device (tax and shipping are added if applicable)

Seminar Location

Hilton Garden Inn
2200 Broadbirch Dr.
Silver Spring, MD 20904

Date & Time

June 28, 2025
12:30 pm - 5 pm

Overnight accommodations and parking are the responsibility of the participant.
Meeting rooms tend to be cool. We suggest bringing a sweater or jacket.

Limited to the 1st 15 registrations.

Cancellation: Paid registrations are non-refundable unless Ampcare cancels the seminar. A full refund will be given if Ampcare cancels the seminar for any reason.

Special Needs: Indicate any special assistance required when you register (e.g. dietary, physical disability, etc.).